

# Le Sueur County Environmental Services

## NEWSLETTER

July 1, 2022

### This Issue:

- 2| Le Sueur County Shoreline Residents Help Protect Our Lakes
- 3| Le Sueur County Shoreland Ordinance Revisions
- 4| Lower Minnesota River East 1W1P Public Kickoff Meeting
- 5| Water Resource Spotlight
- 6| Le Sueur County Water Testing Clinic
- 7| Water Sampling Cannon River Watershed
- 8| Featured Minnesota Native Plant
- 9| Featured Non Native Plant
- 10| Contact Information

**Mailing Address:** 88 S Park Ave, Le Center,  
MN 56057

**Physical Address:** 515 S Maple Ave, Le  
Center, MN 56057

**Phone:** 507-357-8538

**Email:** [environmentalservices@co.le-sueur.mn.us](mailto:environmentalservices@co.le-sueur.mn.us)



# Le Sueur County Shoreline Residents – Help Protect Our Lakes

## **Help Prevent the Spread of Aquatic Invasive Species!**

Le Sueur County would like to continue its efforts, in 2022 and 2023, with increasing awareness about the 21-day dry rule for water related equipment. The County will be partnering with Lake Associations to communicate with residents to dry their used docks, rafts, lifts, and associated equipment for 21 days before moving to a different body of water.

***Did you know?*** Drying your equipment for 21 days is required by law before you move it to or from a different lake (MN State Statute 84D.10 Subd. 4).



### **We are looking for participants with this program!**

- Are you interested in being more involved with your community when it comes to preventing and limiting the spread of AIS?
- Would you like to attend trainings and/or demonstrations to learn how to properly clean and dry your docks, rafts, lifts, and other associated equipment?
- Are you planning on moving, buying, or selling water related equipment to or from a different lake?

If you answered yes to any of the questions, then this program is for you! In order to participate, please fill out the commitment and participation form. Please contact your Lake Association, contact Holly Kalbus (507-357-8540, email address located below), or visit the Le Sueur County AIS page ([Le Sueur County Aquatic Invasive Species Education and Outreach Page](#)) to access the form. Once you have filled out the form it can either be emailed to [hkalbus@co.le-sueur.mn.us](mailto:hkalbus@co.le-sueur.mn.us) or mailed to Le Sueur County Environmental Services, Holly Kalbus, 88 South Park Ave, Le Center, MN 56057.



# Le Sueur County Shoreland Ordinance Revisions

Le Sueur County in partnership with the Minnesota DNR has been working on ordinance revisions for Section 13 Shoreland. This section of the ordinance includes numerous revisions such as but not limited to: impervious surface, retaining walls, rain gardens, beach sand blankets, ice ridges, and stormwater runoff.

The proposed revisions went to a Public Hearing on Tuesday, June 21, 2022 and were approved by the Le Sueur County Board of Commissioners. The proposed changes will be effective starting on **Friday, July 1, 2022.**

To view the proposed ordinance changes please view the Board of Commissioners agenda for June 21, 2022 at the following website:

<https://www.co.le-sueur.mn.us/agendacenter>.

A copy of the final updated Le Sueur County Ordinance will be made available on the following website: <https://mn-lesueurcounty.civicplus.com/558/Le-Sueur-County-Zoning-Ordinance>.



## SECTION 13. LE SUEUR COUNTY SHORELAND MANAGEMENT

### SUBDIVISION 1. STATUTORY AUTHORIZATION AND POLICY

#### A. STATUTORY AUTHORIZATION

This Section regarding the regulation of shoreland is adopted pursuant to the authorization and policies contained in Minnesota Statutes, Chapter 103F, Minnesota Regulations, Parts 6120.2500 & 6120.3900, and the planning and zoning enabling legislation in Minnesota Statutes, Chapter 394, as amended from time to time.

#### B. POLICY

The uncontrolled use of shorelands of Le Sueur County, Minnesota affects the public health, safety and general welfare not only by contributing to pollution of public waters, but also by impairing the local tax base. Therefore, it is in the best interests of the public health, safety and welfare to provide for the wise subdivision, use and development of shorelands of public waters. The Legislature of Minnesota has delegated responsibility to local governments of the state to regulate the divisions, use and development of the shorelands of public waters and thus preserve and enhance the quality of surface waters, conserve the economic and natural environmental values of shorelands, and provide for the wise use of waters and related land resources. This responsibility is hereby recognized by Le Sueur County.

### SUBDIVISION 2. GENERAL PROVISIONS AND DEFINITIONS

#### A. SHORELAND

The land located within the following distances from public waters:

1. One thousand (1,000) feet from the ordinary high water level of a lake, pond or flowage.
2. Three hundred (300) feet from a river or stream, or the landward extent of a flood plain designated by this Ordinance on such a river or stream, whichever is greater.
3. The practical limits of shorelands may be less than the statutory limits wherever the waters involved are bounded by natural topographic divides which extend landward from the waters for lesser distances and when approved by the Commissioner.

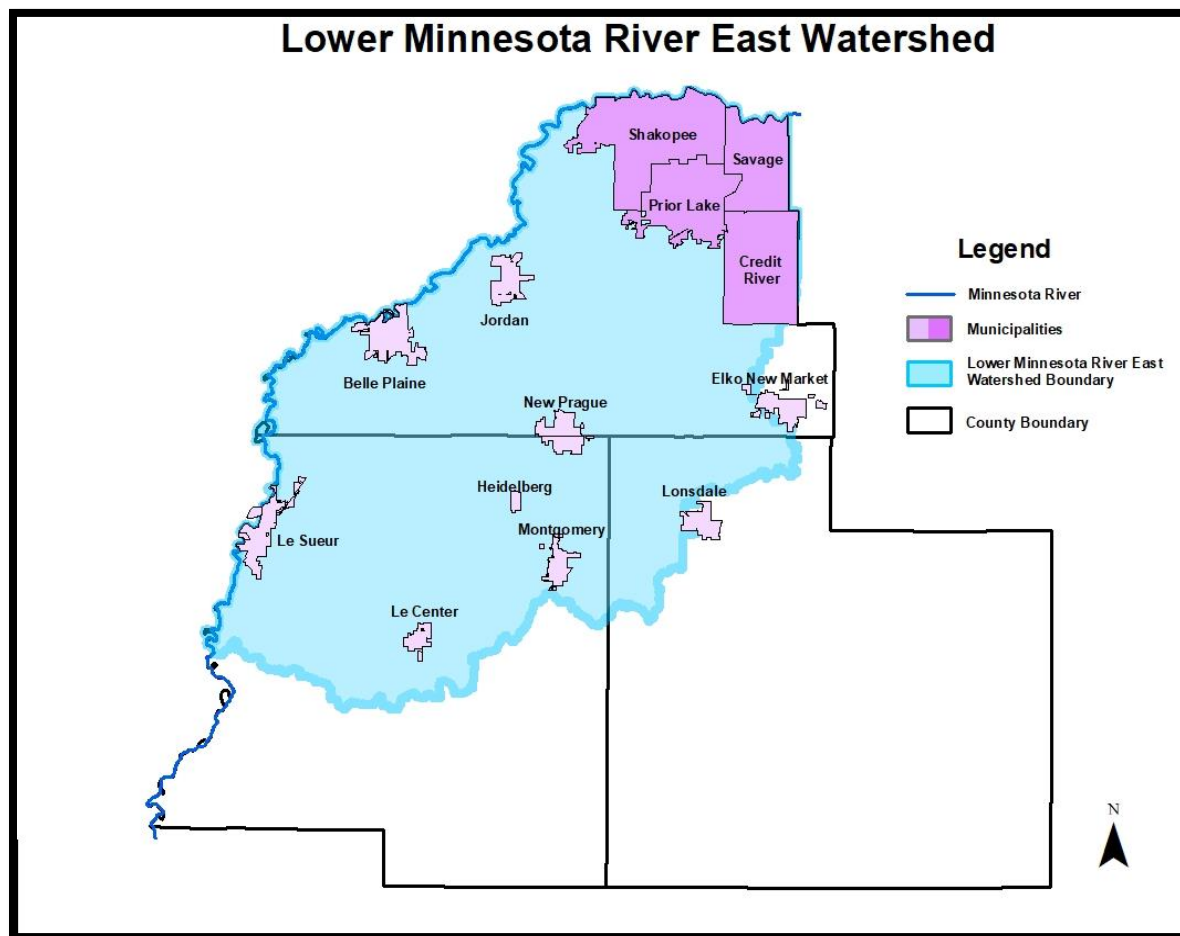
#### B. JURISDICTION

The provisions of this Section shall apply to the shorelands of the public water bodies as classified in this Section. Pursuant to Minnesota Regulations, Parts 6120.2500-6120.3900, no lake, pond, or flowage less than twenty five (25) acres in size in unincorporated areas need be regulated in a local government's shoreland regulations. A body of water created by a private user where there was no previous shoreland may, at the discretion of the governing body, be exempt from this Section.

See Section 4, of this Ordinance for definitions.

# Lower Minnesota River East 1W1P Public Kickoff Meeting

The Lower Minnesota River East Partnership is hosting a public kick off meeting for the Lower Minnesota River East One Watershed One Plan! The purpose of the kickoff meeting is gather public input on issues and priorities within the watershed. These priority issues and resources will help guide the Partnership on where to focus efforts for management, implementation activities, and education/outreach for the watershed.

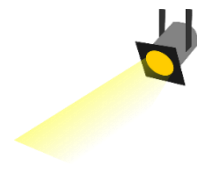


**When:** Tuesday, July 26<sup>th</sup> 2022  
6:00pm-8:00pm

**Where:** Cedar Lake Farm Regional Park  
25875 Juniper Ave, New Prague, MN 56071

*Food and Beverages will be provided.*

**Please RSVP your attendance to:** Holly Kalbus, [hkalbus@co.le-sueur.mn.us](mailto:hkalbus@co.le-sueur.mn.us)



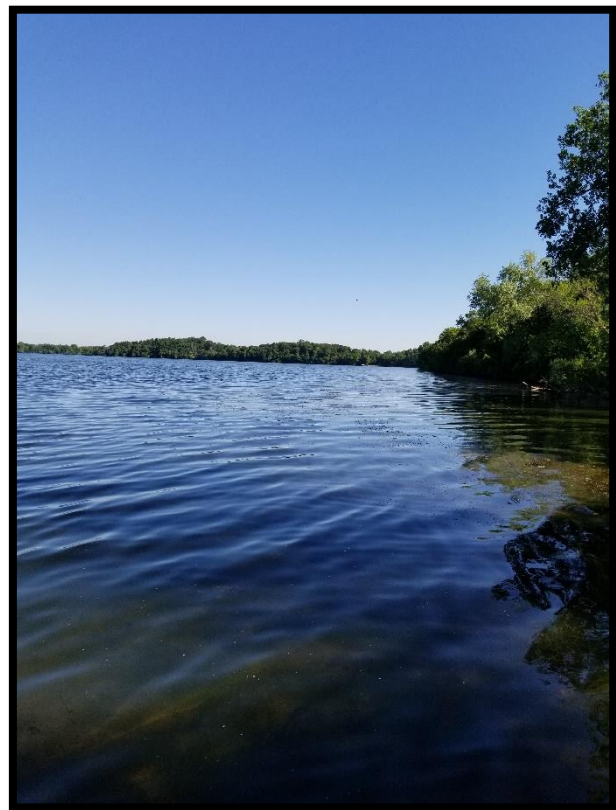
## Water Resource Spotlight



### **This week we are spotlighting Horseshoe Lake!**

Horseshoe Lake is located northeast of the City of Waterville. It is actually located both in Le Sueur and Rice Counties. The lake has a surface area of roughly 416.62 acres, and a maximum depth of 26 feet. The landscape around the lake is predominately agriculture, wetlands or woods. There is some development as well, especially on the east side. Additionally, there is a DNR access located on the southeast side of the lake, and a wildlife management area is located on the northwest side of the Horseshoe Lake.

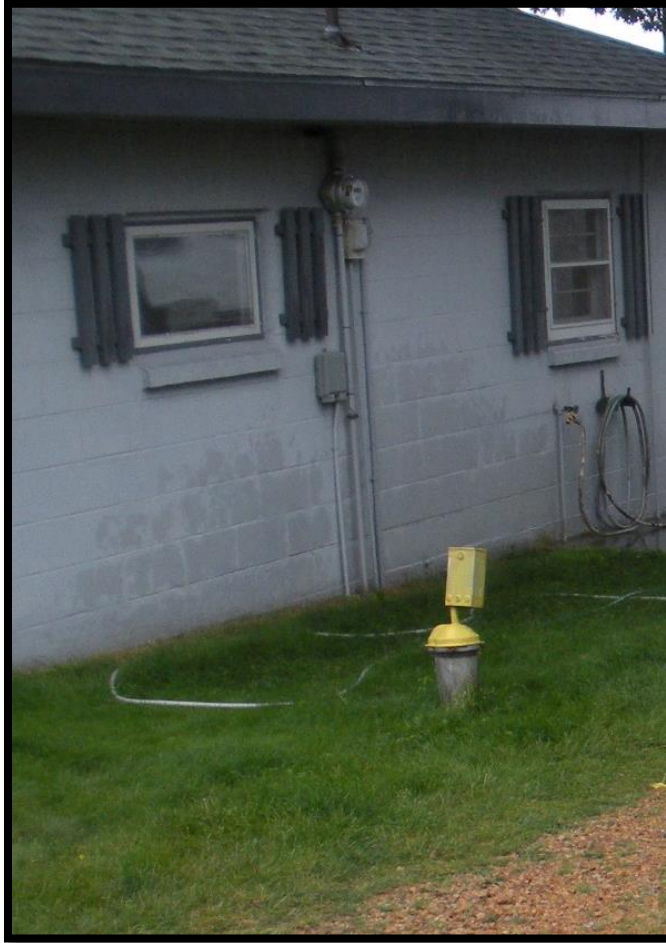
Horseshoe Lake is located within the Cannon River Watershed. Currently, it is not meeting state water quality standards and is considered impaired for nutrients. According to the Minnesota Pollution Control Agency, it is recommended that Horseshoe Lake should reduce phosphorus loads by roughly 75% or 1,500/yr! There are numerous practices that can be implemented in order to help reduce nutrients for Horseshoe Lake. Examples of practices include, but are not limited to: cover crops, reduced tillage, nutrient management, native shoreline buffers, and establishment of perennial vegetation.





# Le Sueur County Water Testing Clinic

**Le Sueur County hosted its first Water Testing Clinic!**



Le Sueur County Environmental Services Department partnered with the Le Sueur County Public Health Department and Le Sueur County Soil and Water Conservation District to host a Water Testing Clinic on Thursday, April 28<sup>th</sup> 2022.

There were two different kits available:

- Coliform Bacteria
- Nitrates

We had a great turnout for the water testing clinic; a total of 39 participants! Le Sueur County would like to host another water testing clinic in the Fall of 2022. There will be different kits available in the Fall. We are hoping to continue to offer 1-2 water testing clinics per year.

If you have any questions or would like to check to see when the next water testing clinic will be held, please visit the following website:

<https://www.co.le-sueur.mn.us/540/Water-Monitoring>.

**or**

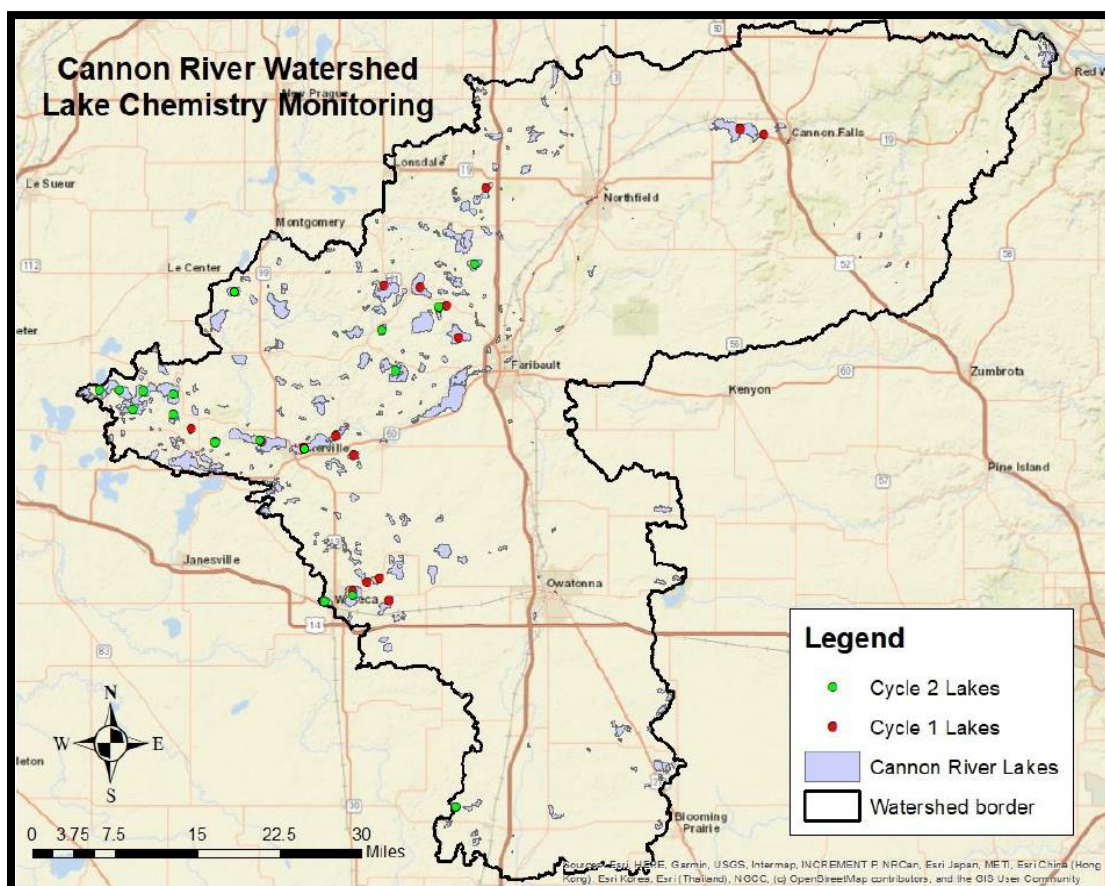
Please contact Holly Kalbus at [hkalbus@co.le-sueur.mn.us](mailto:hkalbus@co.le-sueur.mn.us) or 507-357-8540.



# Water Sampling Cannon River Watershed

Le Sueur County and Le Sueur County Soil and Water Conservation District (SWCD) are sampling lakes from May-September of 2022. Lake sampling is a part of the Minnesota Pollution Control Agency's (MPCA) efforts towards starting the second cycle of the Watershed Restoration and Protection Strategies (WRAPS) Report. The data that is collected from lake sampling is a critical piece in determining existing conditions of water resources, and also, critical for prioritizing and targeting future efforts to help improve and protect those water resources.

All sample sites are considered Cycle 2, and are identified in the map located below as a bright green dot.





# Minnesota Native Plant

## Harebell (*Campanula rotundifolia*)

Harebell, is a perennial that is a part of the Campanulaceae (Bellflower) family. It grows 1 to 2 feet tall with numerous stems that comprise one plant. The root structure is fibrous. The leaves are basal near the base of the plant and begin to send up long wiry and slender stems and leaves. The inflorescence (flower head) is bell-shaped, and ranges in color from blue, purple, and violet. The flower blooms from June through September. Harebell is an extremely resistant plant and prefers medium to dry soils that contain sand and gravel. This species is extremely drought tolerant! They also do well in sunny and partially shady areas. You'll find this plant thriving in open woods, rocky slopes, rocky outcrops, meadows, bluffs, and along rocky shorelines. Harebell provides a food source for birds, butterflies, and pollinators.





# Non Native Plant

## Common or Orange Daylily (*Hemerocallis fulva*)

Orange Daylily is a perennial that is a part of the Liliaceae (Lily) family. It originates from Asia, and was originally introduced as an ornamental/garden plant. It is considered invasive and should be eradicated! The plants can grow 2 to 4 tall. The leaves are long, linear, curved, and bright green in color. Orange daylily's roots are thick and



tuberos. The flowers (inflorescence) are bright orange, large, and contain 6 petals. Orange daylilies bloom from June to August. This species prefers full sun and moist soils, but is



adaptable to a wide range of soil and light conditions. Daylilies are aggressive and often will outcompete native plants.

# Contact Information

## Environmental Services Department

Planning & Zoning, Feedlots, Solid Waste, & Septics

Phone: 507-357-8538

Email: [environmentalservices@co.le-sueur.mn.us](mailto:environmentalservices@co.le-sueur.mn.us)

Environmental Resources Specialist/Water Planner-Holly Kalbus

Phone: 507-357-8540

Email: [hkalbus@co.le-sueur.mn.us](mailto:hkalbus@co.le-sueur.mn.us)

## Le Sueur County Soil & Water Conservation District (SWCD)

Phone: 507-419-0365

Mike Schultz-District Manager

Email: [mschultz@co.le-sueur.mn.us](mailto:mschultz@co.le-sueur.mn.us)

Sue Prchal-Program Specialist

Email: [sprchal@co.le-sueur.mn.us](mailto:sprchal@co.le-sueur.mn.us)

Joe Jirik-District Technician

Email: [jjirik@co.le-sueur.mn.us](mailto:jjirik@co.le-sueur.mn.us)

Nik Kadel-Ditch Inspector

Email: [nkadel@co.le-sueur.mn.us](mailto:nkadel@co.le-sueur.mn.us)

Karl Schmidtke-Resource Technician

Email: [kschmidtke@co.le-sueur.mn.us](mailto:kschmidtke@co.le-sueur.mn.us)

## Natural Resource Conservation Service (NRCS)

Steve Breaker-District Conservationist

Phone: 507-357-4908

[steve.breaker@mn.usda.gov](mailto:steve.breaker@mn.usda.gov)

## Minnesota Department of Natural Resources (DNR)

Garry Bennett-Area Hydrologist

Phone: 320-753-0344

Email: [garry.bennett@state.mn.us](mailto:garry.bennett@state.mn.us)

Carli Wagner-Aquatic Invasive Species Specialist

Phone: 507-389-8812

Email: [Carli.Wagner@state.mn.us](mailto:Carli.Wagner@state.mn.us)

Todd Piepho-Area Hydrologist

Phone: 507-421-1991

Email: [todd.piepho@state.mn.us](mailto:todd.piepho@state.mn.us)

To see which DNR staff is the Area Hydrologist for your region, please click on the following link:

[https://files.dnr.state.mn.us/waters/area\\_hydros.pdf](https://files.dnr.state.mn.us/waters/area_hydros.pdf)